

# Massimo's Clinical Repertory

This is a VERY interesting, useful and ground-breaking repertory.

First of all Massimo gives a great deal of information about previously unknown remedies.

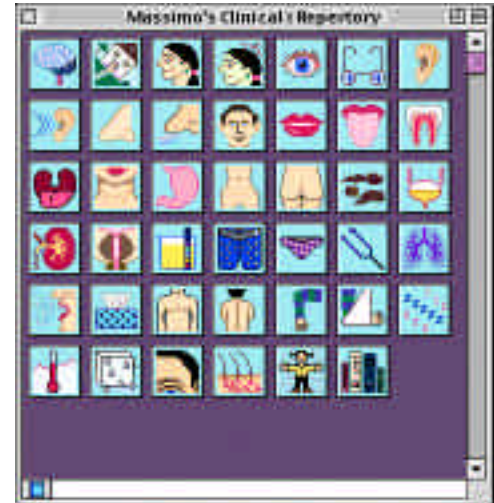
But beyond that this repertory lists only a remedy's most central and reliable symptoms instead of a huge list of every possible symptom. This allows you to easily and confidently match the patient's essential symptoms to those of a remedy.

The repertory is arranged using Kent's sections and grades. There are more than 4000 rubrics containing about 8000 remedies. Four hundred and fifty three different remedies are included - many of which we haven't had much (or any!) central information about. For example, the most represented remedies, in order, are: Aq-mar, Ang, Epip, Carb-v, Brom, Sabad, Phel, Menth, Lyss, Lap-a, Sil, Dict, Colch, Lach, Mag-c, Calc, Pitu-a, Puls, Crot-c, Coff, Tax, Cor-r, Xan, All-s, Am-c, Ign, Dor, Rhus-t...

This information is all original, not available anywhere else and I think among the most reliable on the planet; Massimo is a perfectionist who only presents information that has been repeatedly verified in cured cases.

Along with Boger, Boericke and Vega's repertories, this work can profoundly enhance your practice.

Highly recommended.



Massimo writes about his repertory:

*"Our homeopathic material is often a sea of minutia: a disorganized mix of central, consistent symptoms and insignificant, random reports. It is easy to become excited and reassured by a repertory's sheer volume and forget that, just as in case taking, our goal is not a simple numerical result but seeing through to the essence.*

*This Clinical Repertory is my first version of **an essential repertory that lists only the remedies for which the rubrics are common, expected, reliable and symbolic.** Your process of matching the central themes of the patient with those of the remedy should be far easier with this repertory. What I do, very painstakingly, is to examine multiple cured cases of the same remedy and search for the common symptoms. The cases that I base this work on have had only a single remedy prescribed with excellent and deep results and years of follow-up.*

***Plain Grade:** an important symptom in a case cured successfully and clearly over at least two or three cases. This symptom was not necessarily spontaneously expressed. **Italics:** an important symptom, spontaneously expressed, cured successfully and clearly in more cases. **Bold:** important symptom was cured successfully and clearly in all my cured cases (or almost all). I have a good number of cases with this evident symptom. This symptom was always reported very clearly and spontaneously."*

ABILITY increased: coff., cypr.

ABRUPT: cham., **Hep**., lyc.

ABUSIVE, insulting: cor-r., cupr., cupr-ar., merc.,  
nuph.

ACCIDENTS, children like to play making: nit-ac.,  
prot., sabad.

ADULT, prematurely: cypr., jal., **Juni**., pulx., tax.

ADULTEROUS: **Coff**., **Lach**., **Plat**., verat., **Vip**.

-----Generalities-----

DIARRHEA; amel.: aloe, **Nat-s**., **Podo**., psil.

DISCHARGES, secretions; amel.: calc-s.

DOWSER: ferr.

DRY sensation; internal parts: dor.

DUST; agg.: ars., brom., calc-ar., mag-c., rhod.

ELECTRICAL; current, sensation of: anh., dor., rad-  
br., x-ray

-----Female-----

Female; CLIMACTERIC PERIOD, ailments in: apis,  
cact., **Cimic**., con., crot-h., manc., murx.,  
phys., sabin., sars., **Sep**., tarent., thlaspi,  
ust., vip., **Zinc**.