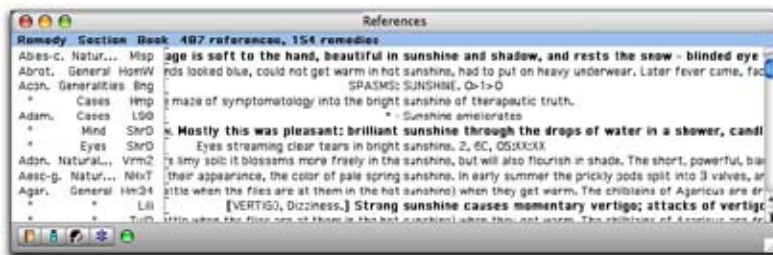


THE REFERENCES WIDOW



When the search has been completed, the References Window opens to a list of the references to your phrase(s).

From the left to the right across the top are column headings:

Remedy - listing the remedies found from your search phrase. Arranged alphabetically.

Section - Listing the section where the remedy from your search phrase is found.

Book - Lists the abbreviation of the name of the book in which the remedy and specific section was found from the search phrase window.

Number of references that were found for a given search (in this case 327)

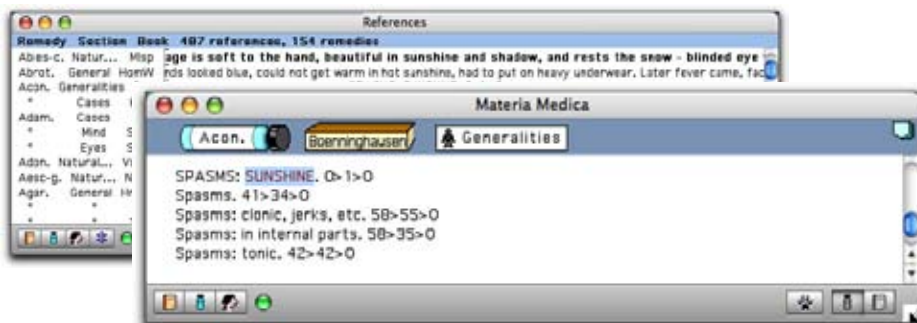
Number of remedies that were found (in this case 108)

Each reference is shown on a single line. You will see the remedy abbreviation, the section name and a three to five letter book code for each reference on the left side of the References Window.

The right side of the window is a part of the actual reference to your phrase in the book. You will see that the word you searched for is centered. If you have searched for more than one word in a phrase, a reference will be shown for *each* word. If the words are very close to one another the same part of the reference may be displayed twice.

You can go directly to a remedy in the search by typing its abbreviation.

To see the reference in its entirety, click on it (Macintosh users double click) and the Materia Medica Window will come to the front with the full text from the book displayed.



CONTEXTURAL MENUS

You are shown contextual menus whenever you ctrl/right click on a remedy, section or book.

Remedies



Limit to Remedy to see only the references to the remedy.

Limit to Remedy's Family shows you a lists of the families that we associated with the remedy. Select a family to see only the references of its members.

Hide Remedy hides the remedy from the remedy's references.

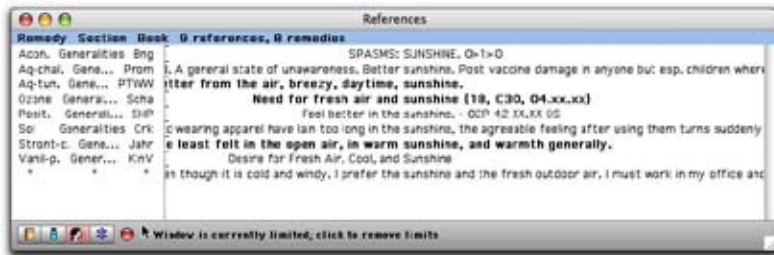
Materia Medica opens the Materia Medica window, limits it to the selected remedy and shows only those books which contain information on that remedy.

Get Info brings forward a pdf containing information about the substance the remedy is made from.

Sections



Limit to Section displays only references from that section.



In the above example, I have limited the window to Generalities and all other references from different sections have been eliminated (the count at the top reflects the limit). They have not been deleted. Clicking on the stop sign at the bottom of the window will allow all the sections to reappear.

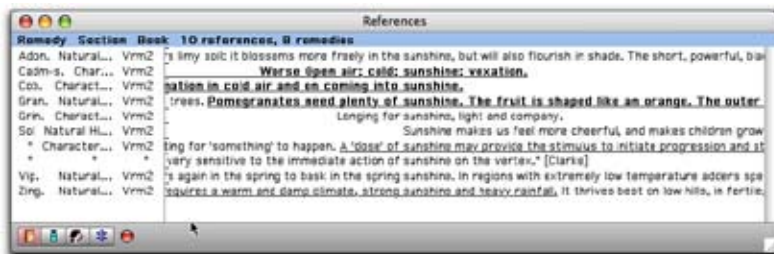
Hide Section allows you to eliminate a certain section or sections from the References window.

Get Info is grayed out indicating that there is no pdf information available regarding the sections.

Books




Limit to Book to only see the references from a given book or author. In the example below, we have asked ReferenceWorks to show only references of remedies from Vermeulen's Synoptic II.



Hide book if you want to remove a book from the list of references. Remember, the book will not be lost, only hidden from the current view.

Materia Medica if you want to go directly to that book in the Materia Medica window. The Materia Medica Window will open and show you the book and all the remedies listed in that book.



ReferenceWorks is catching up to the way we think as homeopaths. We see a name of a remedy and think “I wonder what family it belong to”, we see the name of a book and wonder what else did he write about, we see the result of a search and see the respiratory section in the results and think, I don’t want to look at that stuff. See the abbreviation of a remedy and wonder what it is, one roll over and it is instantly there.

With a couple of clicks we can move into and out of the cars of our train of thought, and then come back again with a click on the stop sign.

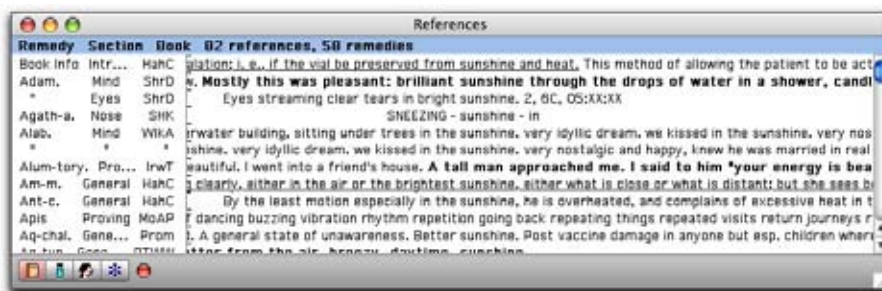
LIMITS



In the lower left side of the References window the Limits options are available. The Limits function in this window will limit the criteria shown in this window only, it has no effect on the Graphs Window or the Rubrics Clipboard Window.

Limit to Books

Review the discussion on creating book limits in the Phrase Window Chapter of this manual. The process is the same. Here is an example: To limit the References window to books which are 'Provings'. Click on the 'Book Icon', select 'Provings' from the pop-down menu. The References window will now look like this:

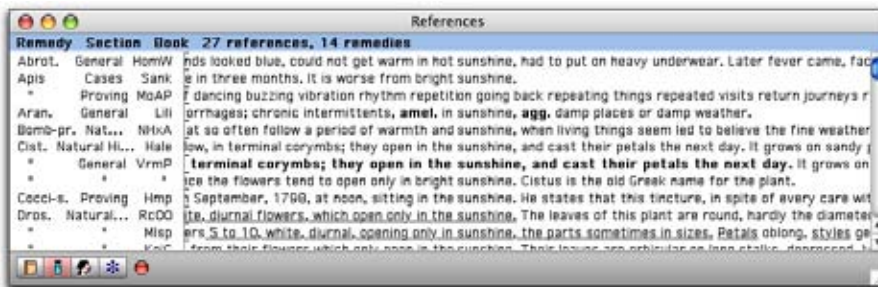


Note that the Book icon is now highlighted red. When you rest the cursor over the red Book icon the scroll bar indicates that the References window is limited to Provings.

Limit to Remedies

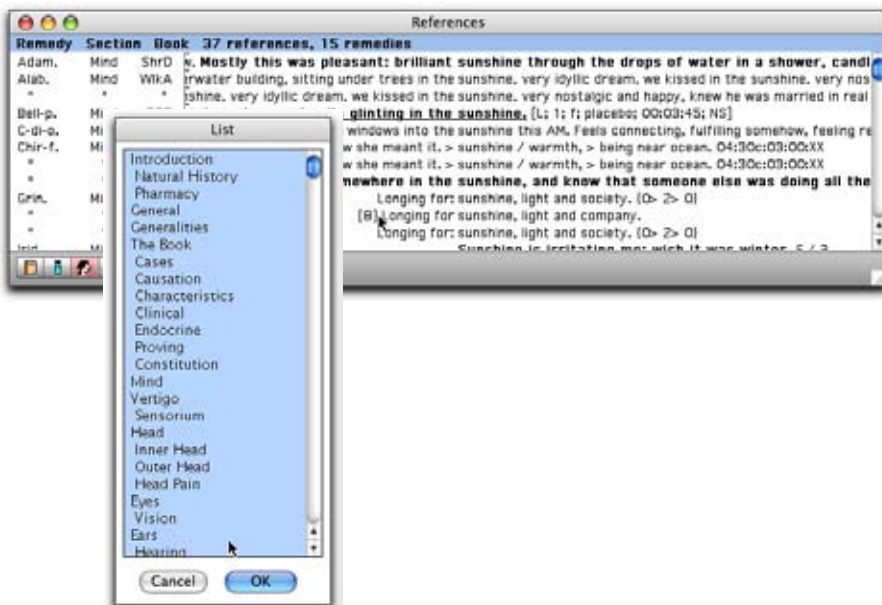
Click on the Remedy Vial Icon and a pop-down contextual menu will appear. Select from the preset Remedies Groupings or create your own individual remedy or group (family) of remedies. Here is an example:

Limit the References window to only the remedies contained in the Tubercular Miasm, by selecting it from the pop-down menu.



Limit to Sections

Click on the Section icon to activate the pop-down menu of certain sections. For this example, select the 'Mind' section.

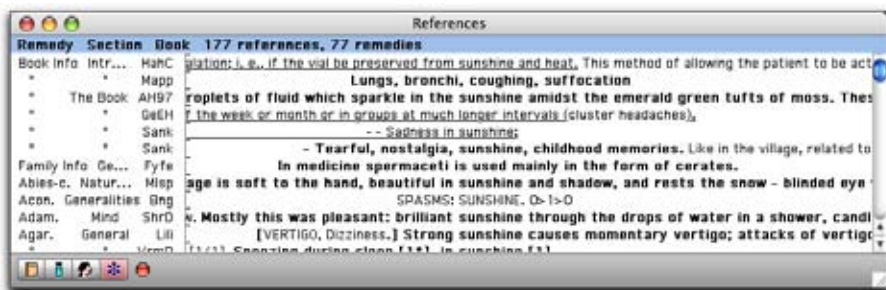


Limit to Outstanding References

This limit option allows you to limit the References window to those remedies that are bold, italicized and capitalized. In other words, remedies that some author (regardless of the type of reference (materia medica or repertory, etc.) regarded as important. Click on the Limit to Outstanding References Icon and your choices are:

✓ All References
Outstanding References

The 'All References' option is already clicked because that is the Default Option of ReferenceWorks 3. Selecting 'Outstanding References' this is what the References window will display



DROP & DRAG

Dragging a rubric from the Rubric Window to the References window displays the search references for that rubric.

Example: Drag a rubric from the Rubrics' Clipboard to the References Window to see its search; this is one way to bring back previous searches. Now press the Control (alt) key and drag a second rubric to cross the two - the references shown are now only the ones for remedies that have both rubrics!

Example: Perhaps you want to see two searches at one time in the References Window? Drag one rubric from the Rubrics Window into the References window to renew its search. Now press the option key (on your keyboard) and then drag a second rubric into the window and you get their results combined!

Dragging a remedy or family group to the References window limits the current references shown to the remedy or family.

Example: Limit the References Window to the plant remedies that are syphilitic. Using the Limit Remedies icon (the remedy vial at the bottom left), select Individual Families and then 'Plants'. Now open the Family graph to Rajan's Miasms and drag the syphilitic area - while pressing the control/alt key - to the References Window.

Example: Copy References. Drag a reference from the References window to the Notes Window; this copies the remedy name, section, book and sentence. (Be sure to drag the portion that is the text, if you drag just the remedy name you will only get the remedy name) "Aether; Mind [Crk]: Pleasant dreams of rapid flight through the air, gorgeous visions and unearthly music."